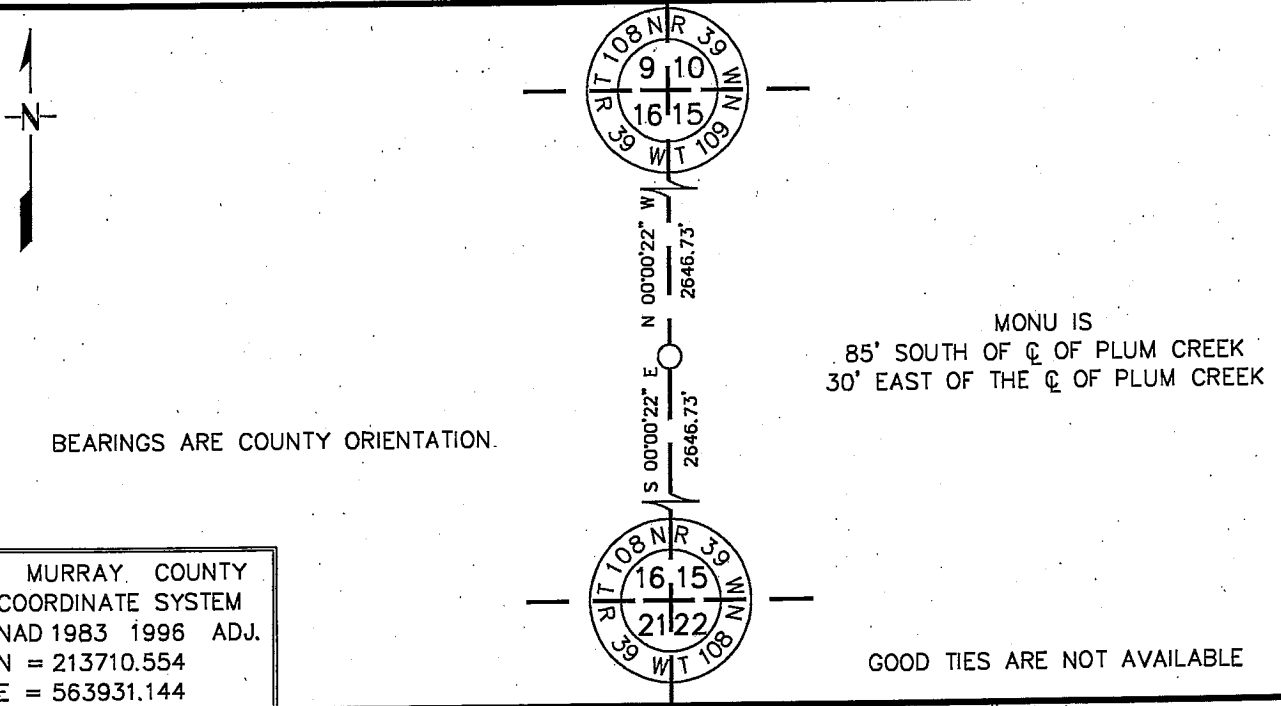


CERTIFICATE OF LOCATION OF GOVERNMENT CORNER

EAST QUARTER Corner of Section 16, Township 108 N, Range 39 W
5th Principal Meridian, State of Minnesota, County of MURRAY

At the corner location shown on the sketch:

- On _____ found a _____
DATE
- left monument as found, lowered monument, removed monument (explain)
- On 7/29/2009 Placed a 3/4" X 24" REBAR WITH PLASTIC CAP STAMPED
DATE "MN DNR LS 17003", UP 0.4'



MURRAY COUNTY
COORDINATE SYSTEM
NAD 1983 1996 ADJ.
N = 213710.554
E = 563931.144

Statement of evidence for this corner location is on back of this page. 8/31/2009
TRA00706.00.00.01

I certify that this document was researched and prepared by me or under my direct supervision.

SIGNATURE Kevin W. Shupert DATE 9/14/09 License Number 17003

Title: Land Surveyor Professional Engineer County Surveyor County Engineer

The DNR Division of Lands and Minerals contacted the following for survey information:

Minnesota History Center in St. Paul
Murray County Recorder's Office
Murray County Highway Engineer's Office
Zieske Land Surveying, Inc. of Windom
Bueltel-Moseng Land Surveying of Marshall

1861 U.S. General Land Office notes, obtained from the Minnesota History Center, show the corner marked with a wood post with the following bearing trees marked:

14" Br. Oak, North $59 \frac{1}{4}^{\circ}$ East, 44 links (29.04 feet)

16" Br. Oak, South 19° West, 49 links (32.34 feet)

The corner is also shown:

1.50 chains (99.00 feet) South of Plum Creek, 10 links (6.60 feet) wide, 2 feet deep and runs north and south-southeast

1.0 chain (66.00 feet) North of descending timbered bluff which bears northeast and southwest

1898 December 22, Surveyor's Record Book A, Page 114, obtained from the County Recorder's Office, contains a survey in Section 15 by J.W. Woolstencroft. Survey graphically shows corner and a point is graphically shown on the section line southerly of the quarter corner but no distances along the section line are shown. Descriptions of monuments found or set at section or quarter corners are not given.

The above information is also contained in a Surveyor's Record Book, obtained from the County Highway Engineer's Office.

1901 Surveyor's Record Book A, Pages 254 and 255, obtained from the County Recorder's Office, contains a survey by D.L. Bighorn, Redwood County Surveyor, which record was made on June 12, 1915, by J.R. Johnston, Murray County Surveyor, from original plat on file in the office of the Town Clerk of Holly Township. Survey shows corner but does not indicate what kind of monument was found or set. The following tie is shown to the corner:

W.T. Burr Oak, 4" diam, 3.50 feet south

The corner is shown:

2645.6 feet from the northeast corner of Section 16

2645.6 feet from the southeast corner of Section 16

The above information is also contained in a Surveyor's Record Book, obtained from the County Highway Engineer's Office.

2009 July 29, the DNR Division of Lands and Minerals roved to the area of the corner with RTK GPS and searched for but found no occupation lines. Then computed the lost position for the corner and found it to be:

a) 2646.73 feet from adjoining section corners

b) 5263.56 feet from the east quarter corner of Section 15

c) 85.0 feet south of the centerline of Plum Creek, which is 12 feet wide

d) 50 - 80 feet north of the area of an eroded slope

e) 9.5 feet west of the northerly projection of a line from the southeast corner of Section 16 thru the centerline of a north-south road located in the area of the east sixteenth corner of the southeast quarter of Section 16

A field search was conducted at the computed lost position for the corner by scanning a 12 foot diameter area with an electronic metal detector but no metal attraction was obtained. Also, searched for but found no evidence of the record ties.

Consulted with LaMoine Meyer, Holly Township Clerk, about the 1901 survey by D.L. Bighorn, and he said that the survey information that the Township has is the same as what's on file at the County Recorder's Office.

Analysis of the above information led the DNR Division of Lands and Minerals to conclude that the lost position is the location of the corner. A $\frac{3}{4}$ inch by 24 inch rebar with a plastic cap stamped "MN DNR LS 17003" was set at the lost position.